

PK 72002

Performance

PALFINGER CRANE



STRENGTH, OUTREACH AND PRECISION



PK 72002 *Performance* – YOUR STRONG PARTNER

The PK 72002 *Performance* proves its superiority in tough day-to-day duty. The combination of high lifting capacity and low weight, little space requirement and highest user friendliness make it the perfect working tool. The return oil utilisation system installed as standard guarantees highest working speed and economic operation.



EXCLUSIVELY FROM PALFINGER:
AOS – THE ACTIVE OSCILLATION SUPPRESSION SYSTEM



EXTENSIVE STANDARD EQUIPMENT

Outrigger system

The 8.6 m outrigger system is fitted as standard with support cylinders that can be hydraulically swivelled up 180° and ensures optimal stability. The control valves for crane and additional supports are mounted as standard equipment on the base frame. The switch-over between crane and outrigger control takes place electrically. Bubble level and hour counter are mounted in the support control valve console.



Internally routed oil ducts

The internally routed oil ducts permit a compact design for the extension system and ensure perfect protection from damage.

Control valve

In combination with the PALFINGER radio control system the load sensing proportional valve enables the crane to be adjusted very slightly.

Return oil utilisation

The high speed of the extension system is impressive. It results from return oil utilisation, which is installed as standard, and the generously dimensioned hydraulic lines. This makes for increased efficiency in any type of working!

Endless slewing mechanism

The standard endless slewing mechanism provides an unrestricted action radius. As a result the crane operates much more quickly and cost-efficiently.

Load-holding valves

They prevent the crane arm from dropping and are fitted as standard onto the slewing mechanism, lifting and boom extension cylinders. The valves are positioned in such a way that they are protected from being damaged.



LEAVES NOTHING TO BE DESIRED



Hose equipment for accessories

With this option you can provide the oil supply to accessories. The hoses are routed in compact troughs and plastic link chains. They are therefore optimally protected.

AOS

The Active Oscillation Suppression system, which is available exclusively from PALFINGER, compensates for jolts and sharp stress cycles caused by crane operation. Because oscillations are eradicated, the crane can work with pin-point accuracy, much more quickly and therefore more cost-efficiently.

Additional hinged arms

To extend the range of applications of the PK 72002 *Performance* additional hinged arms are available in several designs and for various arm versions.

Functional Design

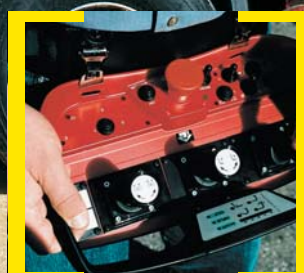
- Cover for the control valve area
- Covering for the hoses behind the crane column
- Outrigger system with internally routed hydraulic hoses

Advanced Package

- Oil cooler mounted
- Electronic HPLS
- Capacity display on control console
- PALFINGER radio control
- PALTRONIC 50
- Functional Design
- Load Sensing operation

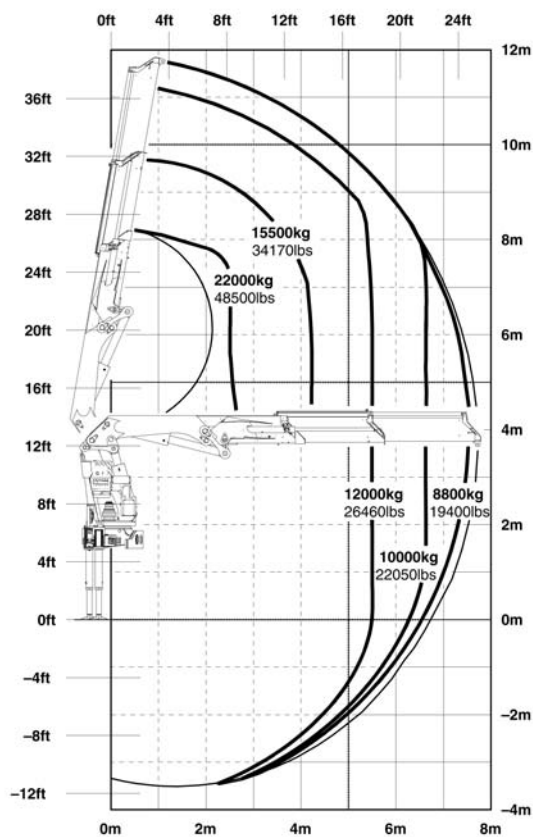
KTL – the cathodic dip painting

The shot-blasted crane parts are covered in zinc phosphate in an immersion process and coated electrostatically. The subsequent two-component top coating of paint provides a surface protection which in the past was usually only found in the automotive industry.

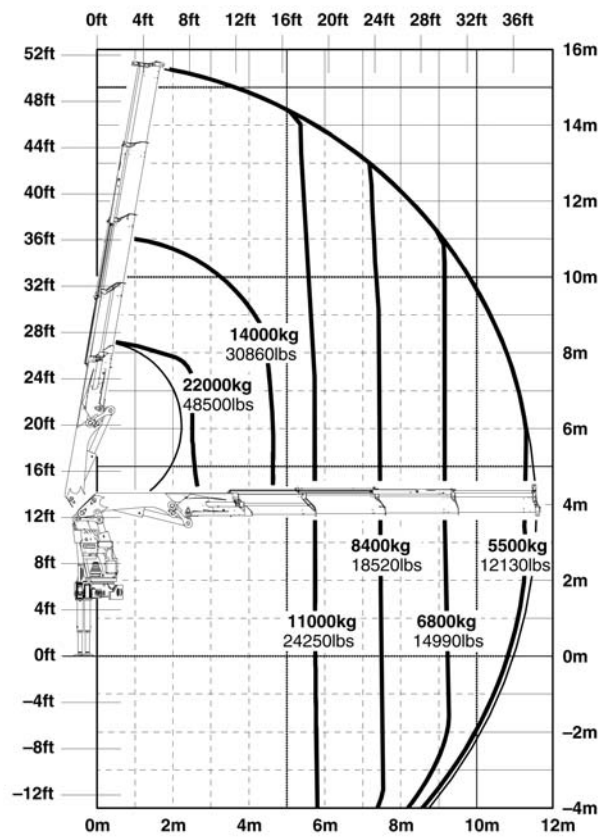


THE PK 72002 Performance: OUTSTANDING MOVEMENT GEOMETRY

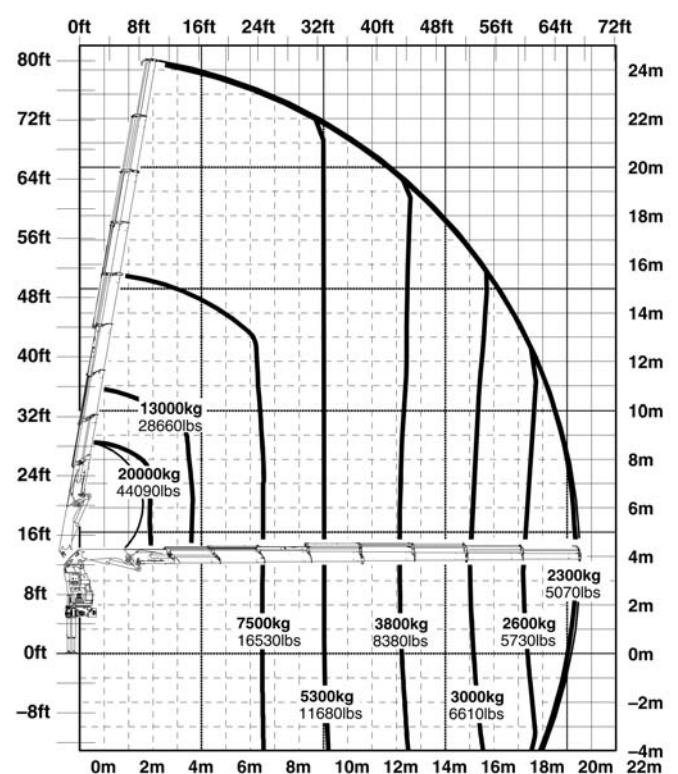
A



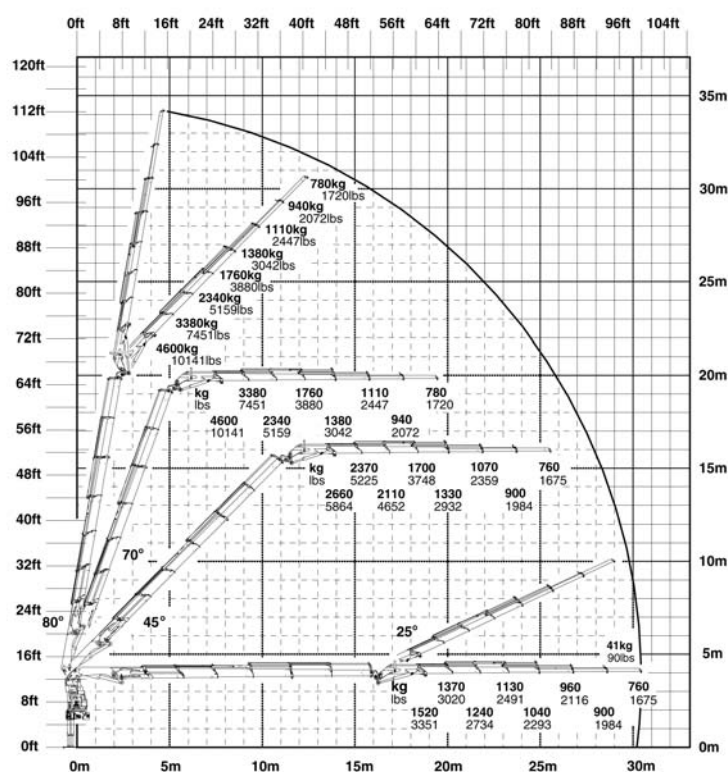
C



G

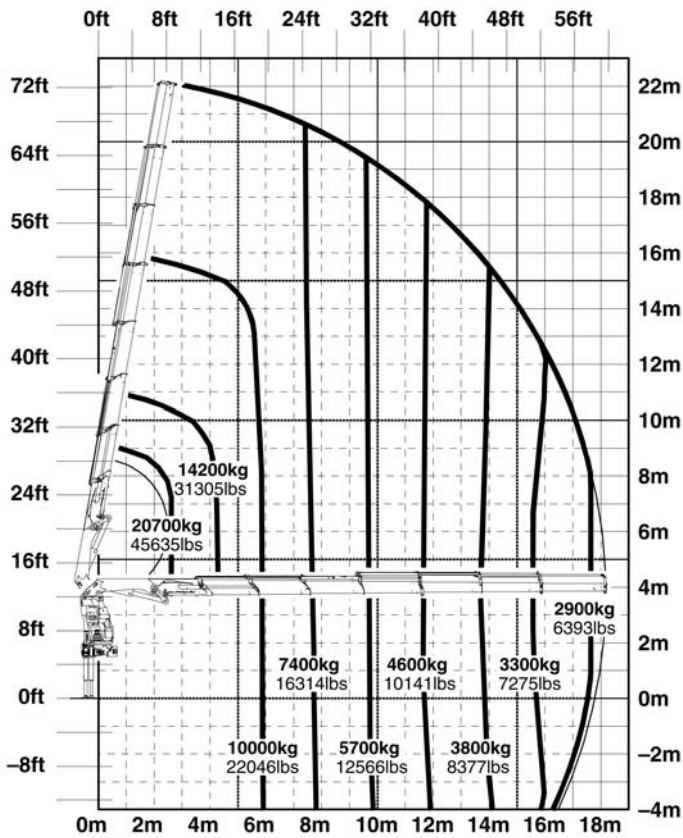


D

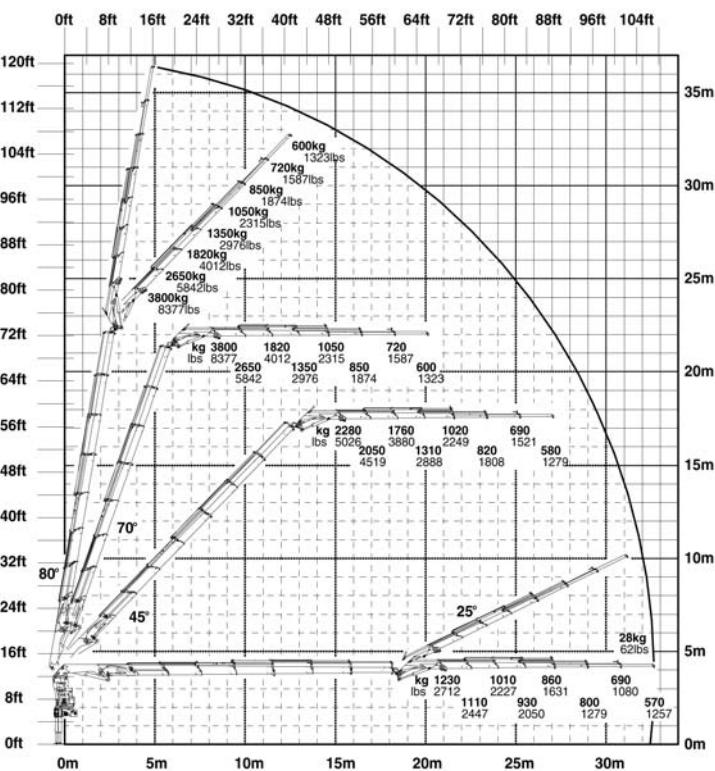


FOR ANY DUTY

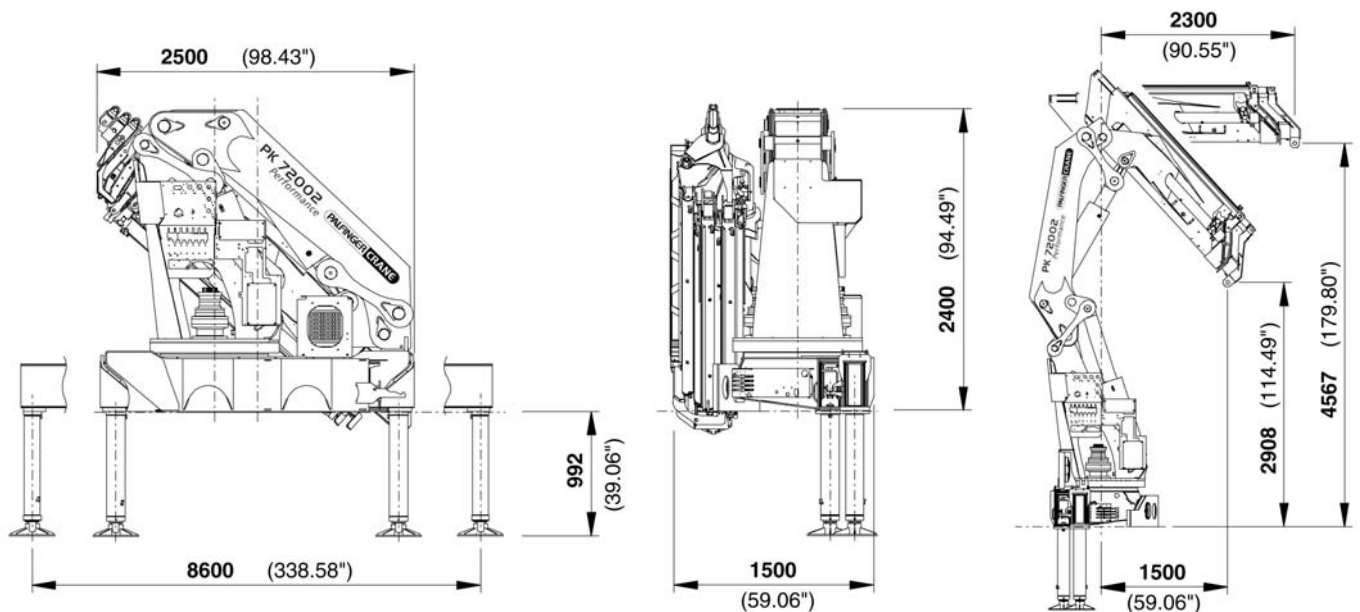
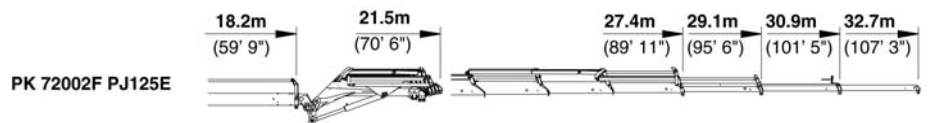
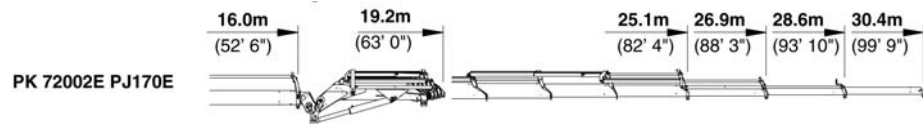
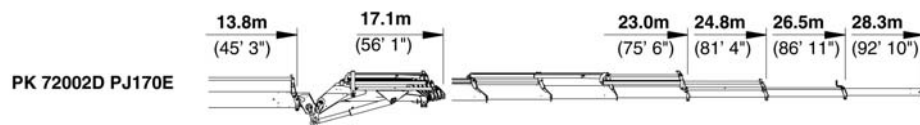
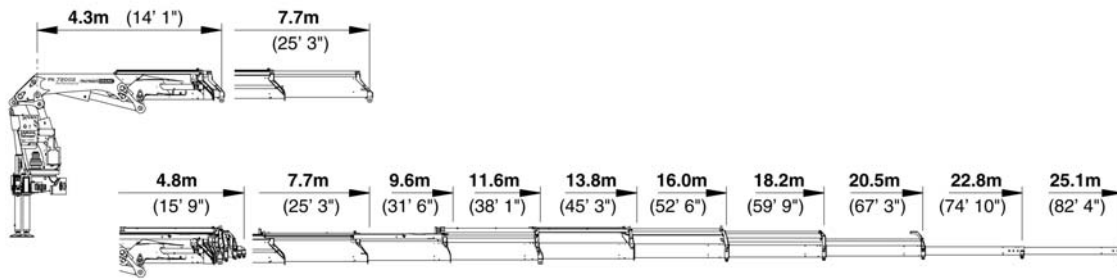
F



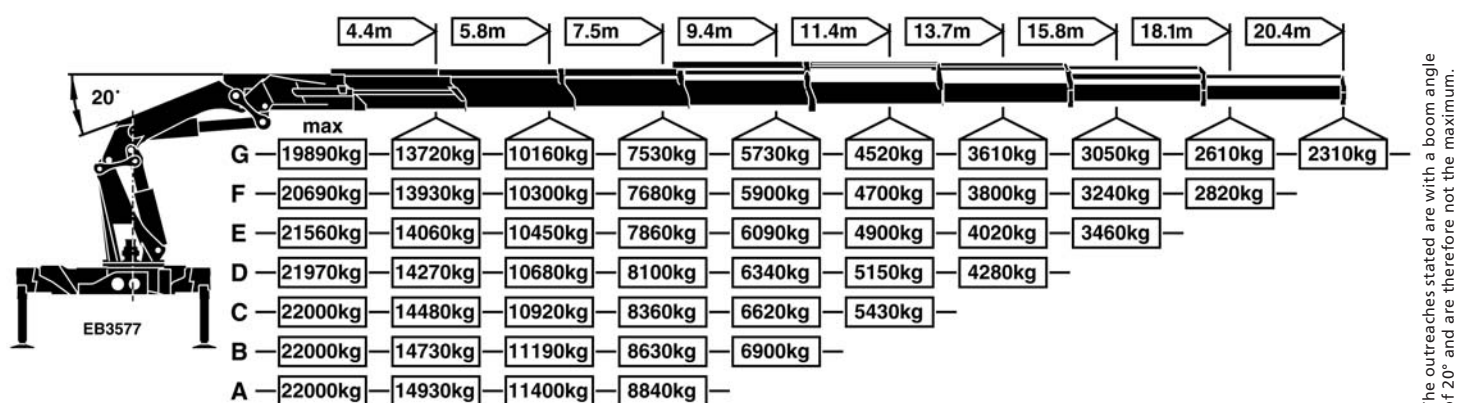
F PJ125E



IDEAL DIMENSIONS



PALFINGER ADVANCED PACKAGE AS STANDARD!



PK 72002 Performance

Technical Specifications (EN 12999 H1-B3)

| | | |
|------------------------------|-------------------|---------------|
| Max. lifting moment | 68.0 mt/667.1 kNm | 491850 ft.lbs |
| Max. lifting capacity | 22000 kg/215.8 kN | 48500 lbs |
| Max. hydraulic outreach | 20.5 m | 67' 3" |
| Max. outreach (with fly-jib) | 31.9 m | 104' 8" |
| Slewing angle | endless | |
| Slewing torque | | |
| with 1 gear | 4.5 mt/44.1 kNm | 32510 ft.lbs |
| with 2 gears | 7.0 mt/68.7 kNm | 50650 ft.lbs |

PK 72002 Performance

Standard crane

| | | |
|----------------------------|----------------------|------------------------------------|
| Outreach | 7.7 m | 25' 3" |
| Stabilizer spread standard | 8.6 m | 28' 3" |
| Fitting space required | min. 1.50 m / 4' 11" | max. 1.65 m / 5' 5" |
| Width folded | 2.5 m | 8' 3" |
| Max. operating pressure | 330 bar | 4785 psi |
| Recommended pump capacity | from 80 l/min | 17.6 imp.gal./min 21.1 US gal./min |
| with RC- and LS-system | to 100 l/min | 22.0 imp.gal./min 26.4 US gal./min |
| Dead weight standard crane | 5750 kg | 12680 lbs |

Applications shown in the leaflet do not always correspond to the standard specifications. Design and specification are subject to change without prior notice.



Country-specific regulations must be considered for the crane installation.

www.palfinger.com

KP-PK72002M2+E, 03/05